



**Being
Nano-Instruments**



High Performance

Multi-Function

*Easy
Operation*



BY1000

Scanning
Tunneling
Microscope

BY2000

Atomic
Force
Microscope

BY3000

Scanning
Probe
Microscope

Toll Free in China: 800-830-3560

Other region, please call 86-20-87688889



High Performance

- Atomic-scale of resolution
- Large sample size
- With a DSP inside for great performance
- Realtime operating system embedded
- Fast Ethernet connection with computer

Multi-Function

- Atomic Force Microscope (AFM)
- Scanning Tunneling Microscope (STM)
- Lateral Force Microscope (LFM)
- Force Analysis: I-V Curve, I-Z Curve, Force Curve
- Online real-time 3D image for better observation
- Multi-channel signals for more sample details
- Trace-Retrace scan, Back-Forward scan
- Multi-Analysis: Granularity and Roughness
- Data load-out for further analysis

Easy Operation

- Fast automatically tip-engaging
- Simple change the tipholder to switch between STM and AFM
- Full digital control, auto system status recognition
- Software-based sample movement
- Nano-Movie function: Continuous data collection, storage and replay
- Modularized design for convenience of maintenance and future upgrade

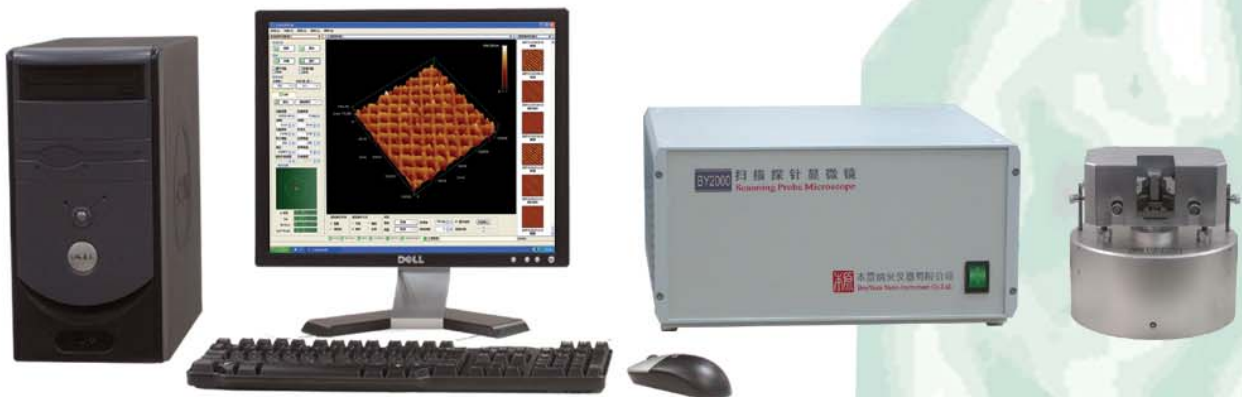
Toll Free in China: 800-830-3560

Other region, please call 86-20-87688889

Specifications

Functions	Atomic Force Microscope (AFM) [▲] Lateral Force Microscope (LFM) [▲] Scanning Tunneling Microscope (STM) [■]
Resolution	AFM: 0.26nm lateral, 0.1nm vertical; STM: 0.13nm lateral, 0.01nm vertical;
Technical Parameters	X-Y scan scope: $\sim 10 \mu\text{m}$ Z distance: $\sim 2 \mu\text{m}$ Image Pixels: 128X128, 256X256, 512X512, 1024X1024 Scan Angle: $0 \sim 360^\circ$ Scan Rate: 0.1 $\sim 100\text{Hz}$
Electronics	CPU: 32-bit Digital Signal Processor (DSP) at 600MHz from Texas Instruments; Fast16-bit DAC Fast16-bit ADC High Voltage: 5 channel Communication Interface: 10M/100M Fast Etheret
Mechanics	Sample Size: Up to 45mm in diameter, 30mm thick; Engagement: Auto engagement with travel distance of 30mm and precision of 50nm;
Software	Online Control Software and offline Image Processing Software for Windows Vista/XP/2000/9x

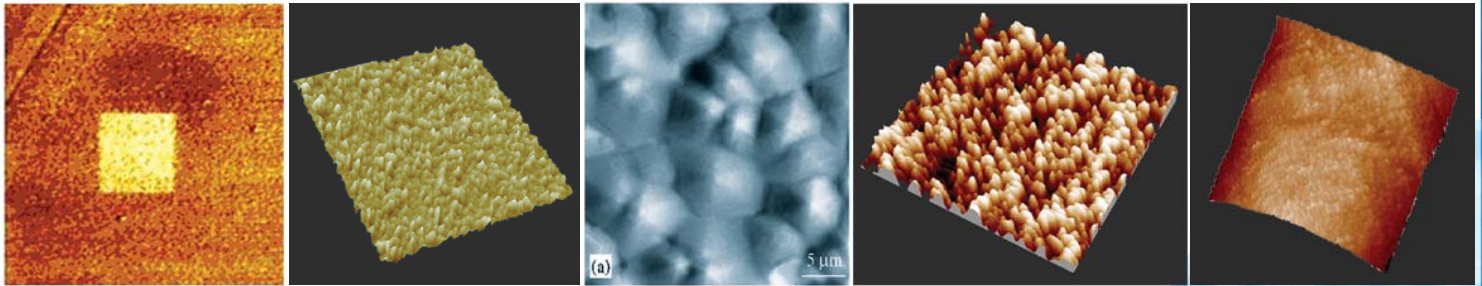
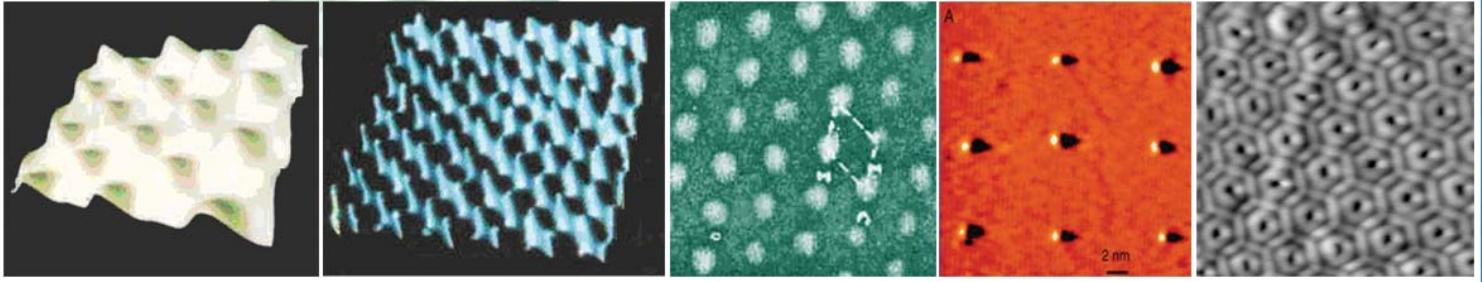
▲ *Not available in BY1000* ■ *Not available in BY2000*



For more details, please log on:
www.spm.com.cn



Being Nano-Instruments



Being Nano-Instruments Ltd.

Toll Free Hotline in China:800-830-3560

<http://www.spm.com.cn>

E-mail: s@spm.com.cn

(100084) ZhongGuanCun, Beijing, China 86-10-51662332

(510070) XianLieZhongLu, GuangZhou, China 86-20-87688889

For more details, please log on:
www.spm.com.cn